

Gas Works Park



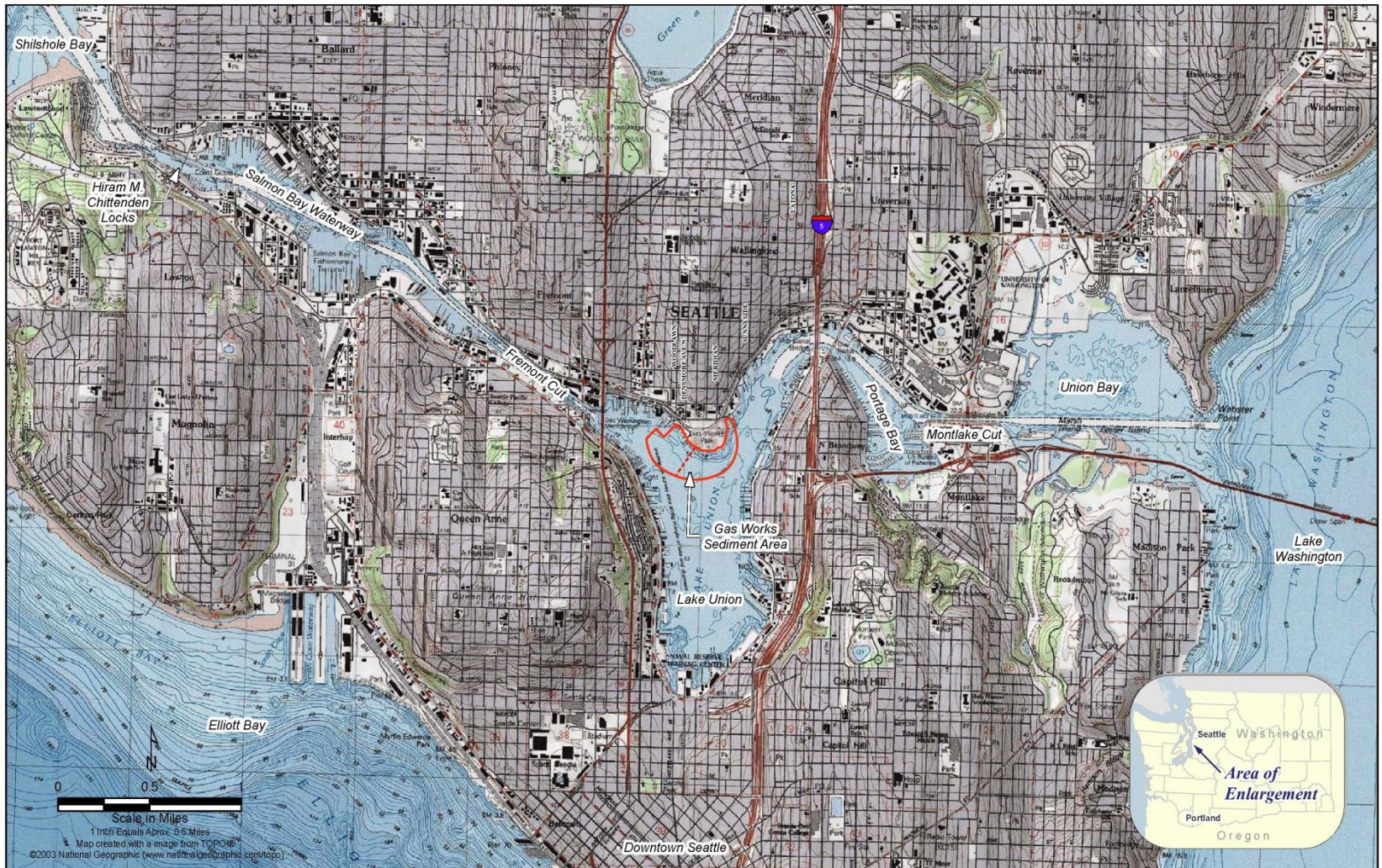
David Graves
Seattle Parks and Recreation
April 15, 2015



Gas Works Park

Seattle

Site Location

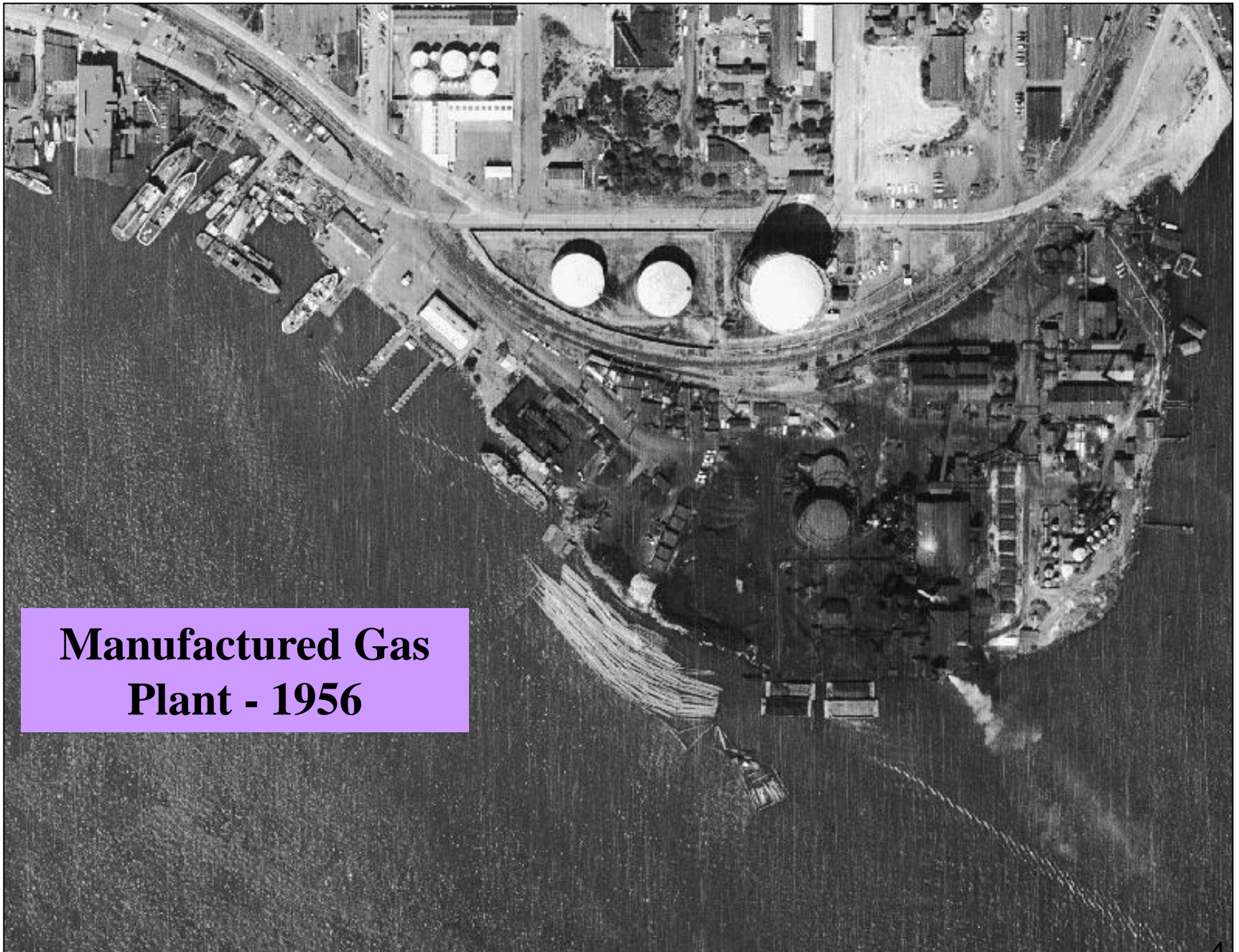


FLOYD | SNIDER
strategy ■ science ■ engineering

Remedial Investigation and Feasibility Study
Gas Works Sediment Western Study Area
City of Seattle

DRAFT

Figure 1.1
Site Vicinity Map



**Manufactured Gas
Plant - 1956**



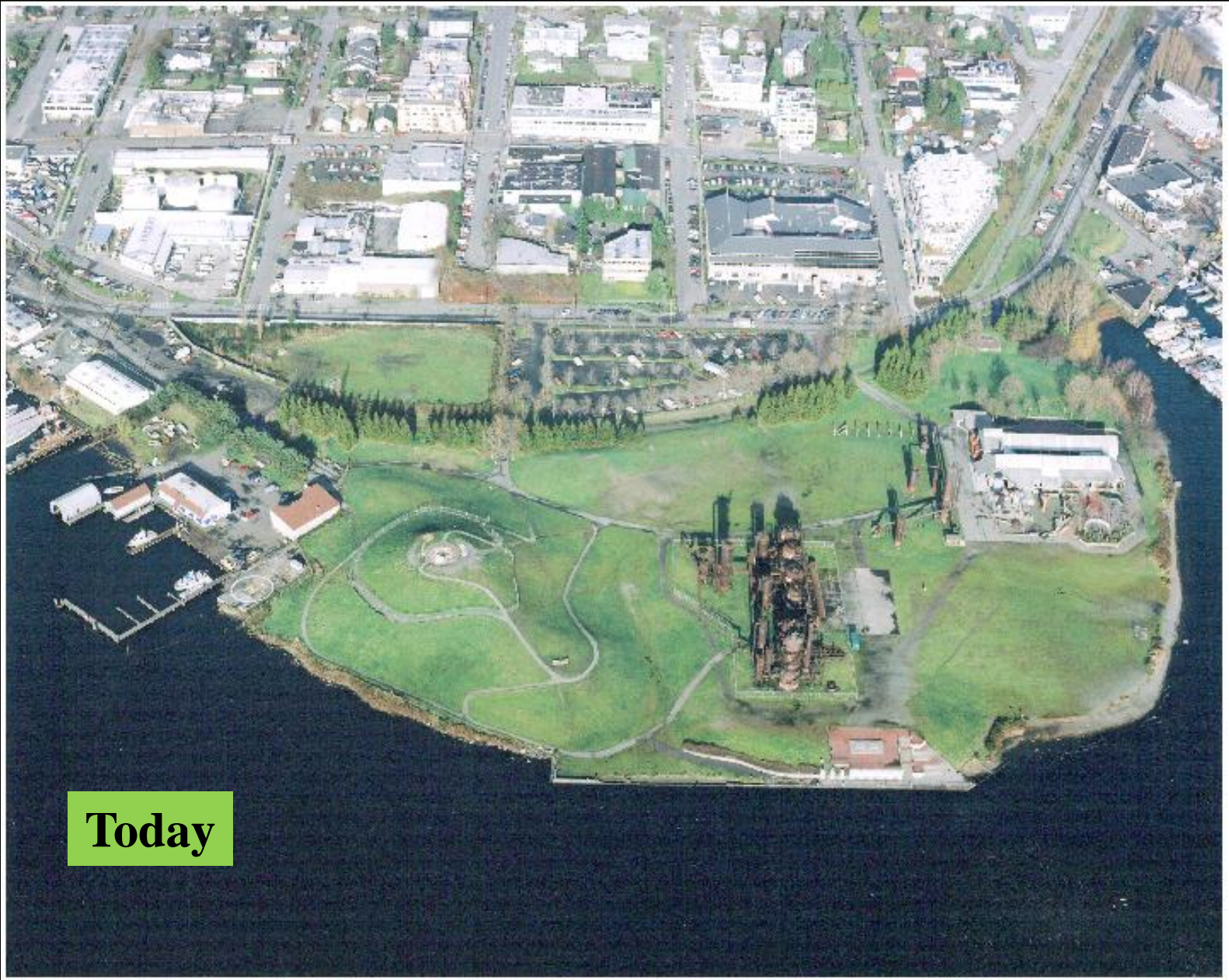
Gas Plant (closed) 1962



1966 during MGP demolition

Initial Park Purchase & Construction Funding

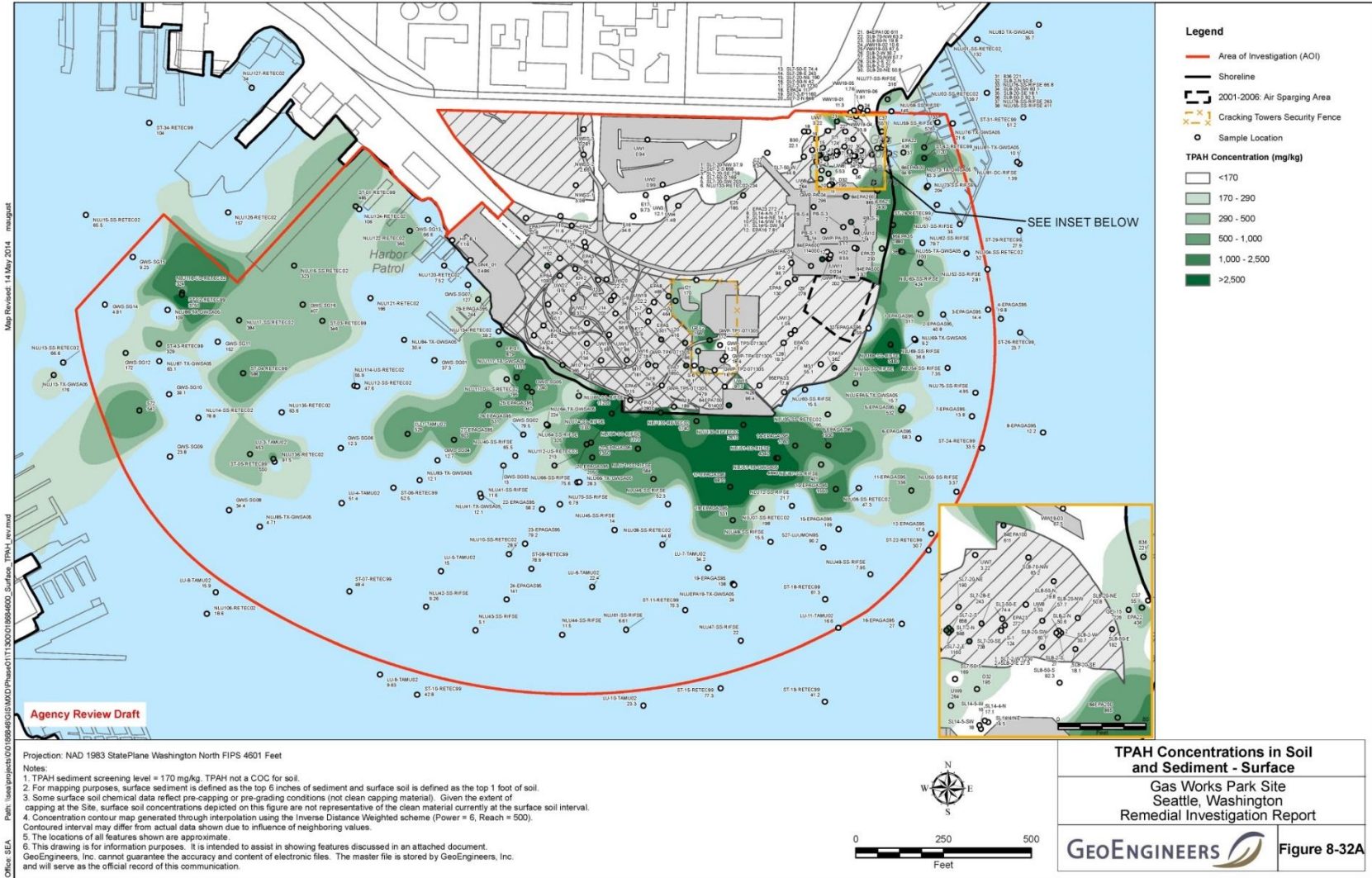
- City purchases site from Washington Natural Gas for \$1.4 Million, payable over 10 years; 1963 - 1973
 - Funding for purchase – CDBG, HUD, IAC, Forward Thrust
- Park construction: 1971 – 1974
 - Construction cost = \$3.3 mill.
 - Funding for construction – Forward Thrust (\$1.8 mill.)
 - Forward Thrust City-wide \$65 mill. Bond measure.
 - Remainder from CDBG
 - Park name – Myrtle Edwards (City Councilperson who originally suggested the site become a park and negotiated the 10 year, no interest deal with the gas co.)



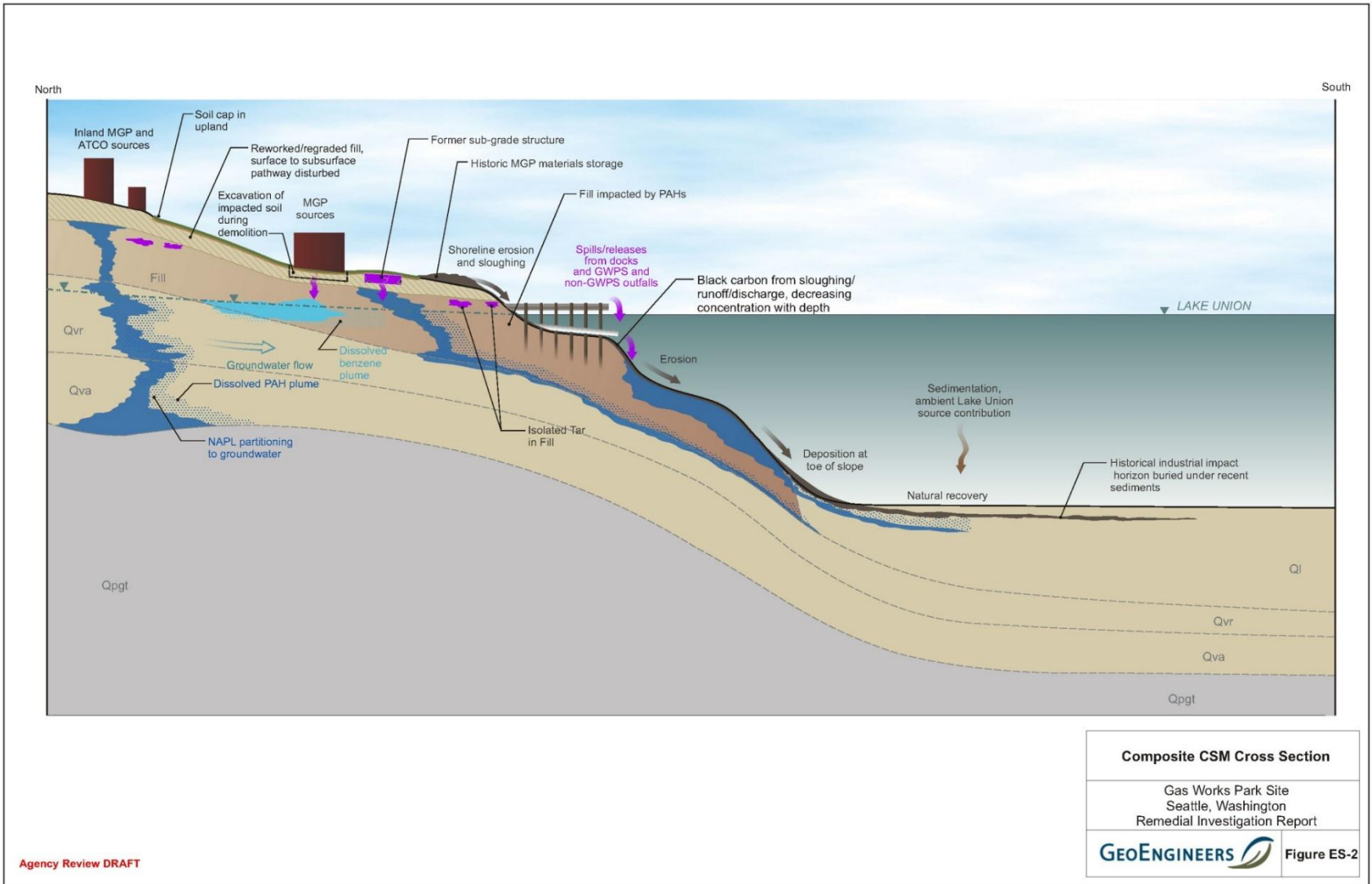
Today







TPAH Site-wide



Conceptual Site Model



HUMAN HEALTH RISK

- Dermal Contact with/Incidental Ingestion of Sediment while Net Fishing
- Ingestion of Contaminated Fish and Shellfish

HUMAN HEALTH RISK

- Incidental Ingestion of Soil
- Dermal Contact with Soil

HUMAN HEALTH RISK

- Incidental Sediment Ingestion
- Dermal Contact with Sediment

ECOLOGICAL RISK

- Ingestion of Contaminated Prey
- Incidental Ingestion of Sediment
- Contact with Contaminated Surface Sediment

Risk Exposure CSM	
Gas Works Park Site Seattle, Washington Remedial Investigation Report	
	Figure 11-10





Day to Day at the Park

- Seattle Parks & Recreation Funding
 - General Fund (REET)
 - Metropolitan Parks District adopted in 2014 (special taxing district)
- General maintenance – 726 hours in 2014
 - Event support/prep
 - Plumbing repairs
 - Graffiti removal
 - Paving and other misc. repairs (union trades)
 - Does not include mowing, leaf blowing
- Landmarks – City & National Register
- Special events - \$77,600 in event revenue in 2014
- Injuries/Liability – Recreational Land Use Statute



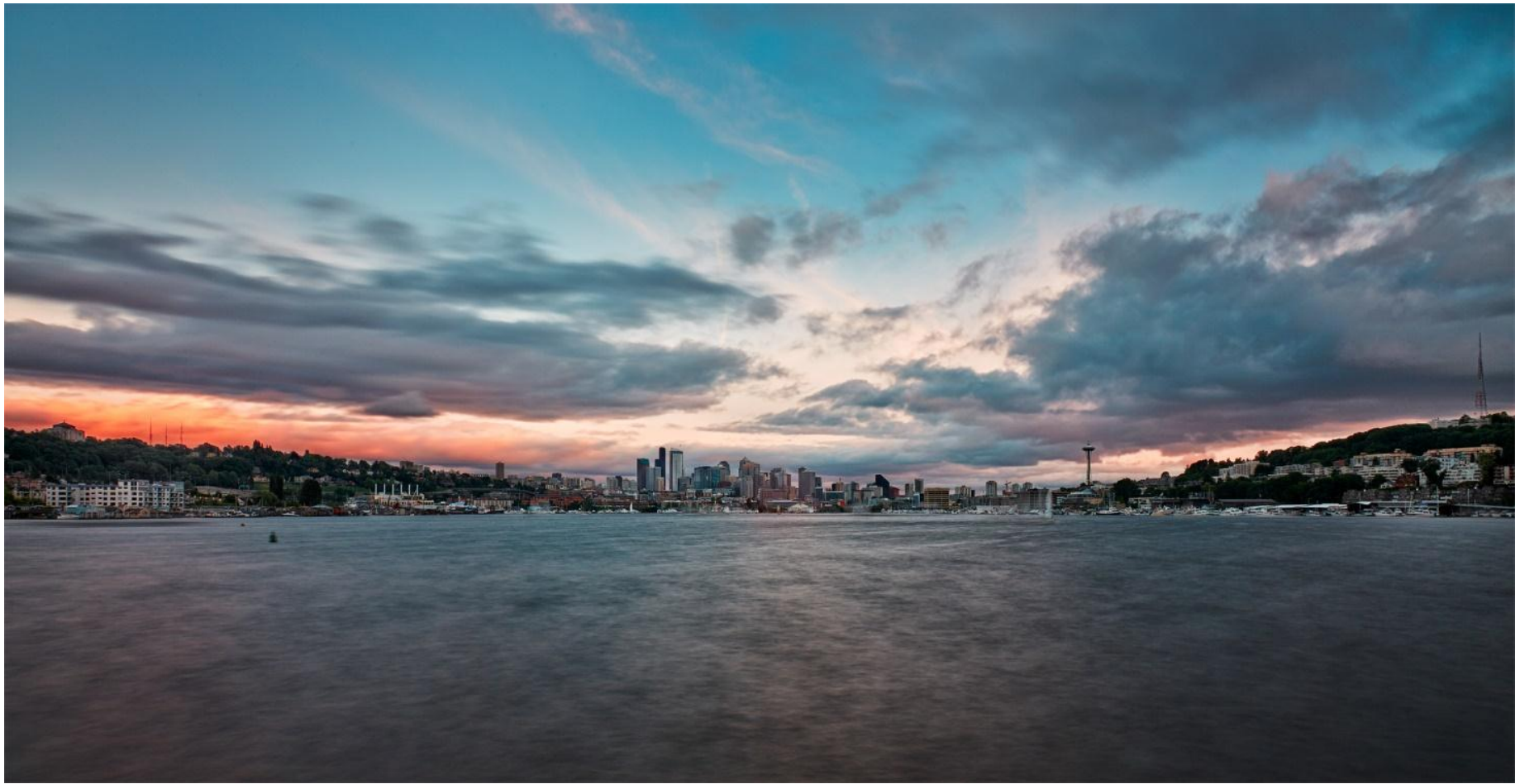






Key Takeaways

- Be strategic about funding – costs will be more than anticipated;
- Site is critical – the public loves the park
- Flexibility is key - Design it so it works for 50,000 people on the 4th of July and for 100 people to go skiing on a winter day.
- The industrial aesthetic resonates and makes the park unique (Amazing Race twice)
- Industrial ruins are expensive to maintain and potentially dangerous.
- Site contamination should be addressed up front to the maximum extent possible.
- Don't be afraid to take these sites on!



Questions?

David Graves
Seattle Parks and Recreation
David.graves@seattle.gov